

NOTES:

1. INTERPRET DRAWING PER ANSI/ASME Y14.5 & Y14.35M.DIMENSIONS AND TOLERANCES PER ANSI/ASME Y14.5M-1994. (unless otherwise specified)
2. MOUNT BOTTOM RAIL WITH FLANGE FACING UP HOLDING COLLECTOR IN PLACE WHILE INSTALLING GOBI CLIPS.
3. MOUNT TOP RAIL WITH FLANGE FACING DOWN SO COLLECTOR CAN REST ON RAIL WHILE INSTALLING GOBI CLIPS.
4. FLANGE FOOT MAY BE POSITIONED PARALLEL OR PERPENDICULAR TO THE GOBI RAIL DEPENDING ON MOUNTING SURFACE.

ITEM NO.	PartNo	DESCRIPTION	CODE	QTY
1	51374	GOBI 410 BLUE SPUTTER COLLECTOR	GOBI 410 001	6
2	40085	FLUSH MOUNT FLANGE KIT (2 per KIT)	FLSH 000 001	3
3	40089	SPLICE KIT	RAIL 000 001	2
4	40090	GOBI MOUNTING RAIL, 102" (2 per KIT)	RAIL 002 000B	3
5	40082	GOBI RAIL CLAMP	CLIP 000 000B	(24 INC)

UNLESS OTHERWISE SPECIFIED
DIMENSIONS ARE IN INCHES
[.XX]=MM, TOLERANCES ARE:
DIMENSIONS ANGLES
.X = ±.030 [1.0] X° = 1°
.XX = ±.010 [0.5] XX° = 1/2°
.XXX = ±.005 [0.25] XXX° = 1/4°

MATERIAL N/A

FINISH N/A

THIRD ANGLE PROJECTION

DRAWN BY: LEVASH 8/21/2015

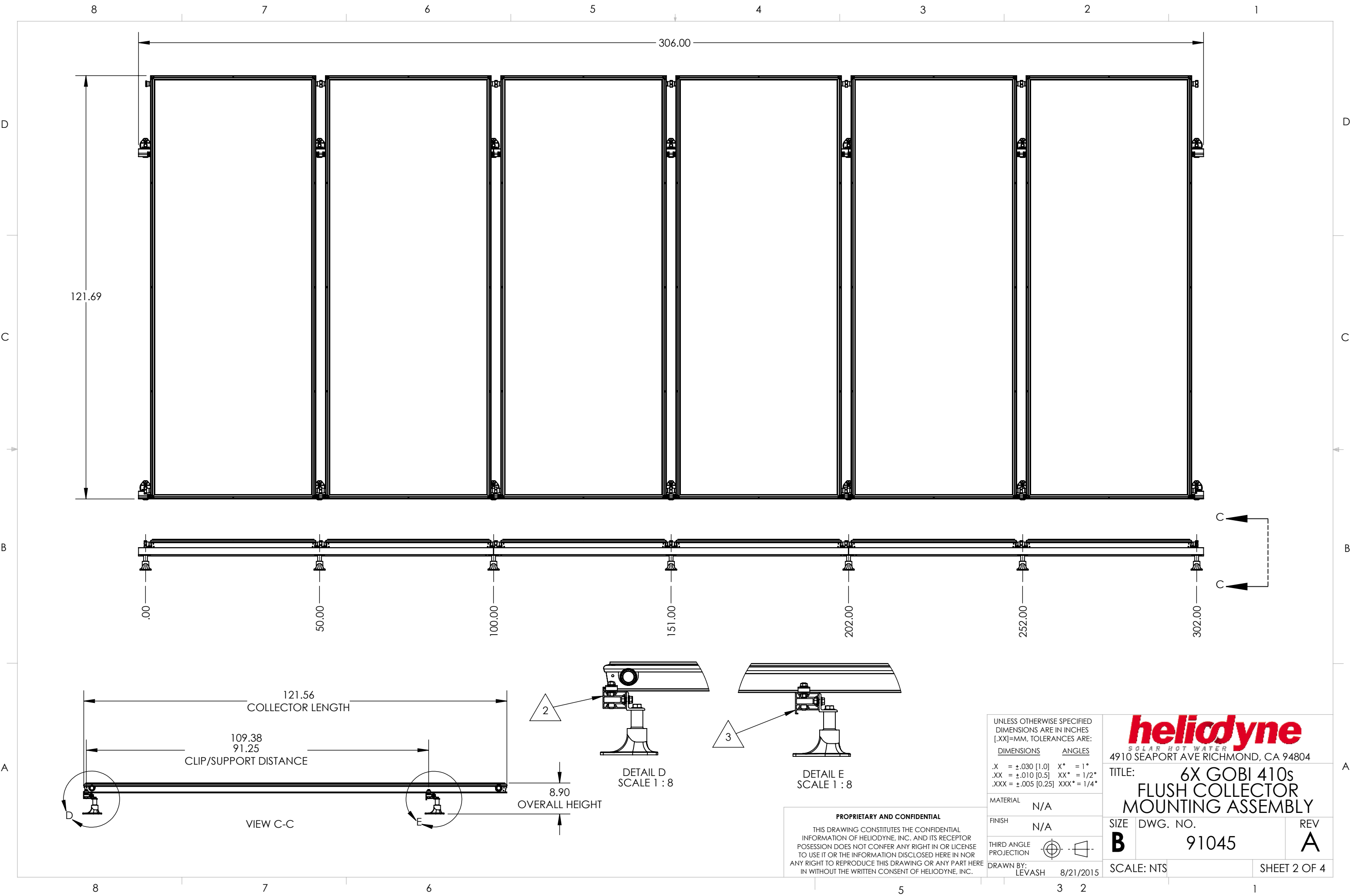
heliodyne
SOLAR HOT WATER
4910 SEAPORT AVE RICHMOND, CA 94804

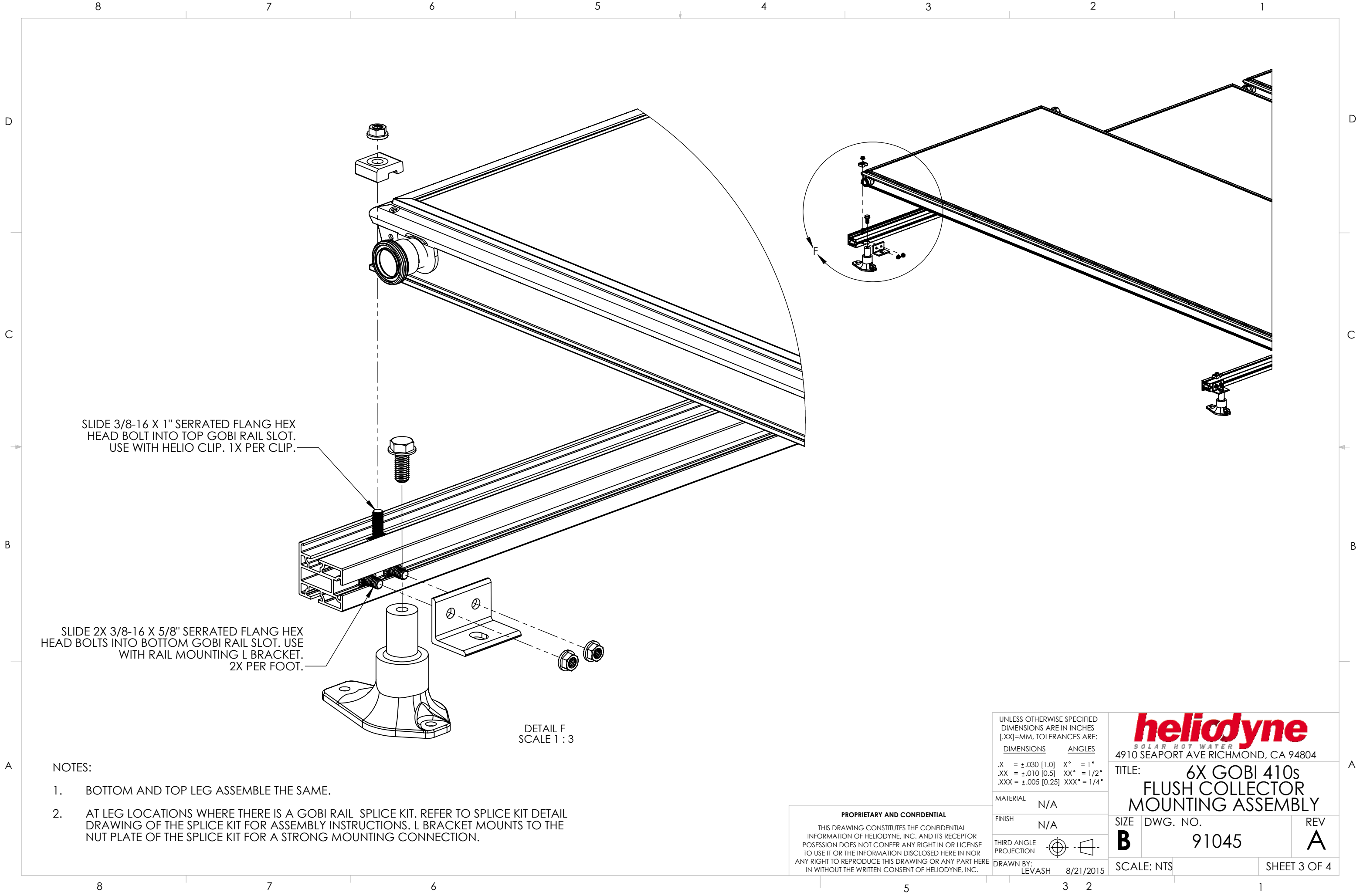
TITLE: 6X GOBI 410s
FLUSH COLLECTOR
MOUNTING ASSEMBLY

SIZE DWG. NO. REV
B 91045 **A**

SCALE: NTS SHEET 1 OF 4

PROPRIETARY AND CONFIDENTIAL
THIS DRAWING CONSTITUTES THE CONFIDENTIAL
INFORMATION OF HELIODYNE, INC. AND ITS RECEPTOR
POSSESSION DOES NOT CONFER ANY RIGHT IN OR LICENSE
TO USE IT OR THE INFORMATION DISCLOSED HERE IN NOR
ANY RIGHT TO REPRODUCE THIS DRAWING OR ANY PART HERE
IN WITHOUT THE WRITTEN CONSENT OF HELIODYNE, INC.



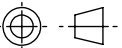


SLIDE 3/8-16 X 1" SERRATED FLANG HEX
HEAD BOLT INTO TOP GOBI RAIL SLOT.
USE WITH HELIO CLIP. 1X PER CLIP.

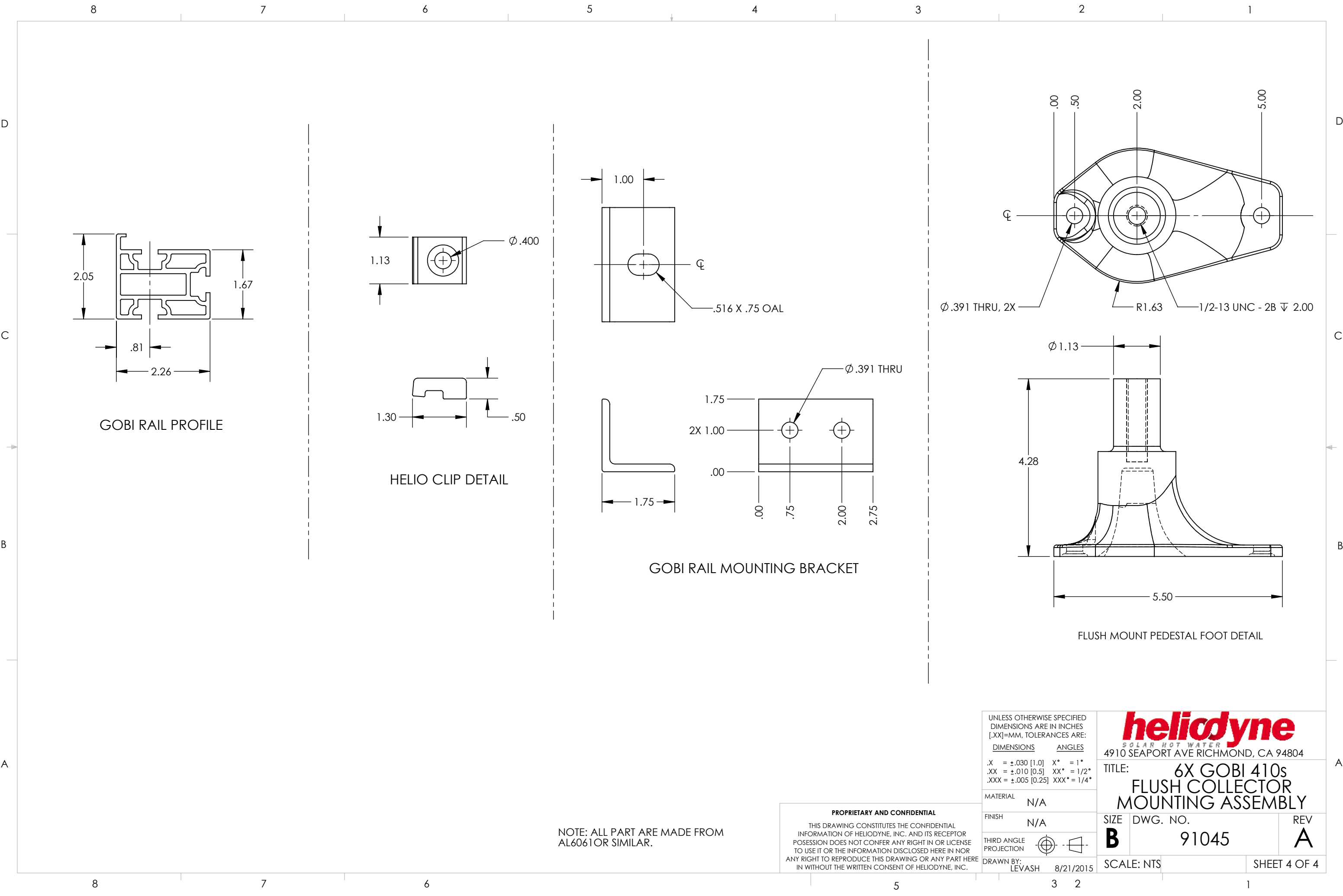
SLIDE 2X 3/8-16 X 5/8" SERRATED FLANG HEX
HEAD BOLTS INTO BOTTOM GOBI RAIL SLOT. USE
WITH RAIL MOUNTING L BRACKET.
2X PER FOOT.

DETAIL F
SCALE 1 : 3

- NOTES:
1. BOTTOM AND TOP LEG ASSEMBLE THE SAME.
 2. AT LEG LOCATIONS WHERE THERE IS A GOBI RAIL SPLICE KIT. REFER TO SPLICE KIT DETAIL DRAWING OF THE SPLICE KIT FOR ASSEMBLY INSTRUCTIONS. L BRACKET MOUNTS TO THE NUT PLATE OF THE SPLICE KIT FOR A STRONG MOUNTING CONNECTION.

UNLESS OTHERWISE SPECIFIED DIMENSIONS ARE IN INCHES [.XX]=MM, TOLERANCES ARE:		heliodyne <small>SOLAR HOT WATER</small> 4910 SEAPORT AVE RICHMOND, CA 94804	
<u>DIMENSIONS</u>	<u>ANGLES</u>	TITLE: 6X GOBI 410s FLUSH COLLECTOR MOUNTING ASSEMBLY	
.X = ±.030 [1.0] X° = 1° .XX = ±.010 [0.5] XX° = 1/2° .XXX = ±.005 [0.25] XXX° = 1/4°			
MATERIAL	N/A		
FINISH	N/A	SIZE	DWG. NO.
		B	91045
THIRD ANGLE PROJECTION			REV
			A
DRAWN BY: LEVASH 8/21/2015		SCALE: NTS	SHEET 3 OF 4

PROPRIETARY AND CONFIDENTIAL
THIS DRAWING CONSTITUTES THE CONFIDENTIAL
INFORMATION OF HELIODYNE, INC. AND ITS RECEPTOR
POSSESSION DOES NOT CONFER ANY RIGHT IN OR LICENSE
TO USE IT OR THE INFORMATION DISCLOSED HERE IN NOR
ANY RIGHT TO REPRODUCE THIS DRAWING OR ANY PART HERE
IN WITHOUT THE WRITTEN CONSENT OF HELIODYNE, INC.



GOBI RAIL PROFILE

HELIO CLIP DETAIL

GOBI RAIL MOUNTING BRACKET

FLUSH MOUNT PEDESTAL FOOT DETAIL

NOTE: ALL PART ARE MADE FROM AL6061OR SIMILAR.

PROPRIETARY AND CONFIDENTIAL
THIS DRAWING CONSTITUTES THE CONFIDENTIAL INFORMATION OF HELIODYNE, INC. AND ITS RECEPTOR POSSESSION DOES NOT CONFER ANY RIGHT IN OR LICENSE TO USE IT OR THE INFORMATION DISCLOSED HERE IN NOR ANY RIGHT TO REPRODUCE THIS DRAWING OR ANY PART HERE IN WITHOUT THE WRITTEN CONSENT OF HELIODYNE, INC.

UNLESS OTHERWISE SPECIFIED DIMENSIONS ARE IN INCHES [.XX]=MM, TOLERANCES ARE: DIMENSIONS ANGLES .X = ±.030 [1.0] X° = 1° .XX = ±.010 [0.5] XX° = 1/2° .XXX = ±.005 [0.25] XXX° = 1/4°		heliodyne SOLAR HOT WATER 4910 SEAPORT AVE RICHMOND, CA 94804	
MATERIAL N/A		TITLE: 6X GOBI 410s FLUSH COLLECTOR MOUNTING ASSEMBLY	
FINISH N/A		SIZE DWG. NO.	REV
THIRD ANGLE PROJECTION		B 91045	A
DRAWN BY: LEVASH 8/21/2015		SCALE: NTS	SHEET 4 OF 4